

BUILDING RECOVERY: CLOSING THE GAP



11 November 2021

Following our [Insights report](#) earlier in the year, Future of London's Building Recovery Conference seeks to inspire participants with practical solutions to the issues we're all facing as we seek a fair and inclusive recovery from Covid-19. Delegates will gain fresh perspectives from our diverse range of speakers and have the opportunity to be part of the discussion on how we address inequalities through recovery.

#ClosingTheGap

AGENDA

Wifi network: Hilton Honors | Password: Tower

09:30 Arrivals, registration, light breakfast

		Room
10:00	WELCOME	Tower B+C
Welcome:	Nicola Mathers , Chief Executive, Future of London	@Nicola_Mathers @FutureofLDN
10:10	KEYNOTE	Tower B+C
Speaker:	Caroline Macfarland , Founder and Director, Common Vision	@CarolineMacf @CommonVisionUK
10:30	OPENING SPOTLIGHT: A fair and inclusive recovery	Tower B+C
We hear from LB Newham about their approach to a fair and inclusive recovery .		
Speaker:	Rokhsana Fiaz , Mayor of Newham, LB Newham	@RokhsanaFiaz

11:00 Two-minute silence

11:02	PANEL: Measuring and monitoring	Tower B+C
A cross-sector approach to measuring social impact. We discuss if we should collaborate to develop a unified approach.		
Chair:	Hannah Gibbs , Head of Knowledge, Future of London	@FutureofLDN
Panel:	Megan Cannons , Head of Impact and Reporting, L&Q	@LQHomesMatter
	Robert Evans , Joint Managing Partner, Argent	@ArgentLLP

11:35 Break

SUPPORTED BY



11:50 MORNING BREAKOUTS Room**SEMINAR Skills – gearing up for green growth Tower A**

Where are the key opportunities to provide green skills to address gaps in our industry and the jobs market? What can we do as a sector to capitalise on this opportunity? Learn from these positive examples.

Chair: **Michael Nathan**, Emerging Talent Programme Manager, Future of London @FutureofLDN
 Panel: **Mark Booth**, Employment and Services Delivery Manager, LB Camden @CamdenCouncil
Robert Macdiarmid, Group Sustainability Director, Countryside @CountrysideProp
Nina Royle, Quality Manager, The Forward Trust @ForwardTrust

SEMINAR The future of London’s public space More London Suite

We hear from the [next generation of London leaders](#) about how to transform our public spaces to be safe and inclusive for all.

Chair: **Katie Randall**, FoL Alumni Representative and Managing Consultant, Inner Circle Consulting @CitadenK @ICCLimited
 Panel: **Lizzie Bird**, Deputy Manager – Strategic Planning, LB Hackney @hackneycouncil
Ayanda Collins, Interim Head of Transport Projects & People Friendly Streets, LB Islington @IslingtonBC
Stefanos Koryzis, Research Manager, London Communications Agency @LDNComms
 Reflections: **Sara Hanrahan**, Partner, Lewis Silkin @LewisSilkin

SEMINAR Transport in changing times Tower B+C

How do we make future transport schemes green, fair and accessible and avoid a car-led recovery? Showcasing innovative approaches to the challenge at different scales.

Chair: **Bhavna Brooker**, Spatial Planning Programme Lead, TfL @TfL
 Panel: **Nick Bec**, London Data and Digital Leader, Arup @ArupUK
David Christie, Growth and Masterplanning Manager, TfL @TfL
Kate Pennick, Campaigns Lead, Transport for All @KatiePennick @TransportforAll

12:30 Lunch

13:20 AFTERNOON BREAKOUTS Room**WORKSHOP Working with our communities as equals More London Suite**

Showcasing community engagement at [Shepherd’s Bush Market](#), followed by a workshop to tease out the priorities for engagement in a post-Covid world.

Chair: **Tara Nelson**, Research and Projects Officer, Future of London @FutureofLDN
 Led by: **Louise Page-Jennings**, Director of Communications and Social Impact, Yoo Capital

SEMINAR Grassroots culture and heritage as a catalyst for recovery Tower A

Drawing on LB Brent’s experience as [London Borough of Culture](#), we will discuss how heritage and culture from minority groups can be built into regeneration programmes to help reduce multiple inequalities.

Chair: **Jane Jones**, Head of Leadership, Future of London @FutureofLDN
 Panel: **Zerritha Brown**, Brent 2020 Legacy Manager, LB Brent @ZeeBrown50 @Brent_Council
Diane Shrouder Johnson, Storyfinder, No Bass Like Home
 Reflections: **Kate Falconer-Hall**, Associate, Montagu Evans @MontaguEvansLLP

14:05 Move to Tower B+C for final sessions

		Room
14:10	PANEL: International perspectives	Tower B+C
Inspiring international examples to help us tackle one of our biggest challenges: good quality, affordable housing for our diverse communities.		

Chair: **Mandar Puranik**, Head of Area Regeneration and Economic Renewal, LB Ealing @MandarPuranik
 Panel: **Natalia Martínez**, Head of Fundraising, Habitat 3 (Catalonia, Spain) @Habitat_3
Diana Yordanova, Communications Officer, Housing Europe (Belgium) @HousingEurope
Stephanie Zeulevoet, Architect, Inbo Architects (the Netherlands)
 Reflections: **Tricia Patel**, Partner, Pollard Thomas Edwards (UK) @PTEarchitects

14:55	SPOTLIGHT	Tower B+C
Demonstrating a practical approach to promoting small BME architecture and design practices, and providing a refreshing and honest perspective on promoting inclusivity through our decision-making processes .		

Speaker: **Paul Smith**, Regional Procurement Manager London & South East, LHC @LHCProcurement

15:10	CLOSING REMARKS	Tower B+C
--------------	------------------------	------------------

15:20 Networking drinks sponsored by Inner Circle Consulting

SESSIONS, SPEAKERS & CHAIRS

Welcome & Keynote speaker

Welcome: [Nicola Mathers](#), Chief Executive, Future of London | [@Nicola_Mathers](#) [@FutureofLDN](#)



Nicola joined Future of London in March 2017. Her role is to guide the quality and growth of FoL's offer to London, providing research, professional development and connection to the built environment sector. Previously Nicola was Head of Cities Programme at Design Council Cobe and developed national toolkits and best practice guidance at the Commission for Architecture and the Built Environment. Previously Nicola has been a member of the Mayor's London Green Spaces Commission and the TCPA Inclusive Planning Sounding Board.

[Caroline Macfarland](#), Director, Common Vision | [@CarolineMacf](#) [@CommonVisionUK](#)

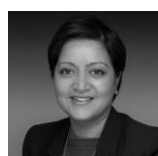


Caroline Macfarland is the Director of Common Vision, a think tank specialising in deliberative dialogue, community engagement and public imagination. Previous roles include managing director at the think tank ResPublica and special advisor to the Big Lottery Fund. Caroline has supported the strategic design of several place-based funding initiatives, including the £150m endowment to Power to Change. She sits on the boards of Local Trust and the UK Cohousing Trust.

Opening spotlight: A fair and inclusive recovery

We hear from LB Newham about their approach to a [fair and inclusive recovery](#).

[Rokhsana Fiaz](#), Mayor of Newham, LB Newham | [@RokhsanaFiaz](#) [@NewhamLondon](#)



Mayor Rokhsana Fiaz OBE was elected the Mayor of Newham in May 2018, and is the lead member for Inclusive Economy and Housing Delivery. Since her election, she has been leading a transformative and radical agenda in Newham reflecting a series of manifesto commitments. These include addressing inequality and poverty, investing in young people to widen opportunities, embedding Community Wealth Building as the economic approach being adopted by the Council and increasing participatory democracy and respond to the Climate Emergency. Newham has become the first council in the country to make the health, happiness and wellbeing of its residents the key indicator of economic success. She is the co-chair of London's only Enterprise Zone in the Royal Docks and is a member of the Mayor of London's LEAP Board. As an advocate for racial justice and equalities, Rokhsana was awarded an OBE in 2019 for services to Black and Minority Ethnic Communities in the UK.

Panel: A sector-wide approach to measuring inequality

A cross-sector approach to measuring social impact. We discuss if we should collaborate to develop a unified approach.

Chair: [Hannah Gibbs](#), Head of Knowledge Future of London | [@FutureofLDN](#)



Hannah joined future of London in January 2021 as Head of Knowledge (maternity cover). Prior to this, Hannah worked at the Canal & River Trust on public-sector funding and partnerships across London and the South-East. With a background in urban regeneration, Hannah has collaborated with housing associations, architects, local authorities, developers, transport authorities and communities working to make a difference to their area.

Megan Cannons, Head of Impact and Reporting, L&Q | [@LQHomesMatter](#)



Megan Cannons has worked in social research for over a decade, working for local government before entering housing. During her time at L&Q, Megan has developed a practical framework to evaluate L&Q's community investment projects, using shared measures to evidence achievements against the L&Q Foundation's theory of change. Megan is keen to drive continual improvements in how the Foundation manages its impact. Megan has an MSc in Social Research Methods from the University of Surrey.

Robert Evans, Joint Managing Partner, Argent LLP | [@ArgentLLP](#)



Robert is Joint Managing Partner of Argent (Property Development) Services LLP ('Argent'), one of the country's leading urban regeneration specialists. He is also CEO of the 67-acre King's Cross Estate in Central London. He is a Director of FoL, Chair of Governors at the King's Cross Academy School and Chair of the New London Architecture (NLA) Sounding Board. He is a Fellow of the RICS.

Morning breakout: Skills – gearing up for green growth

Where are the key opportunities to provide green skills to address gaps in our industry and the jobs market? What can we do as a sector to capitalise on this opportunity? Learning from some positive examples.

Chair: [Michael Nathan](#), Emerging Talent Programme Manager, Future of London | [@FutureofLDN](#)



Michael joined Future of London in July 2021 to manage the [Emerging Talent Programme](#) which aims to support our members with improving the ethnic diversity of their teams through their entry level talent pool. Michael has over 17 years' experience of managing all aspects of early careers programmes. Michael has managed recruitment and development for graduates, undergraduates, apprentices and trainees for John Lewis, Skanska, Lloyds Banking Group and most recently Mace, where he led the management of over 200 graduates and apprentices.

Mark Booth, Employment Services Delivery Manager, LB Camden | [@CamdenCouncil](#)



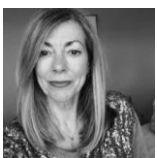
Mark joined the London Borough of Camden in 2011 as Employment Services Delivery Manager. Prior to this he worked for LB Barking and Dagenham managing training and employment projects. Mark began his career in the North-West of England working on Single Regeneration Budget programmes and has since then worked in a variety of roles including as a consultant on housing renewal and estate regeneration schemes. He has a wide range of experience of physical and social regeneration programmes and is committed to ensuring that local benefits are achieved through regeneration and renewal activities.

Robert Macdiarmid, Group Sustainability Director, Countryside | [@CountrysideProp](#)



Robert has been working in the field of sustainability and social responsibility for over 20 years, most of which spent in the construction and built environment sector. More recently, before joining Countryside as the Director of Sustainability, he was working at the heart of Government in the Cabinet Office, leading on sustainability. The current focus of his attention is a carbon reduction pathway at Countryside that will seek to achieve net zero emissions by 2030.

Nina Royle, Quality Manager, The Forward Trust | [@ForwardTrust](#)



The Forward Trust empowers people to break the cycles of addiction or crime to move forward with their lives. Nina has been working on their [Green sector recovery training and jobs pathway](#) in London. This programme is funded by the Mayor of London's 'Good Work for All' adult education budget, and supports unemployed adults into green jobs through training, mentoring and coaching.

Morning breakout: The future of London's public space

We hear from the [next generation of London leaders](#) about how to transform our public spaces to be safe and inclusive for all.

Chair: [Katie Randall](#), Future of London Alumni Representative and Managing Consultant, Inner Circle Consulting | [@CitadenK](#) [@ICCLimited](#)



Katie is passionate about making places work for people. As a managing consultant for Inner Circle Consulting, she works with local authorities within and outside of London, assisting them in turning strategy into delivery. Katie is currently focusing on town centres (and their post-covid recovery) across the south of England.

[Lizzie Bird](#), Deputy Manager, Strategic Planning, LB Hackney | [@hacknycouncil](#)



Lizzie is an urban planner currently working in the Strategic Planning Team at LB Hackney. Lizzie has over 12 years of experience working in urban planning, regeneration and engagement. Before Lizzie joined LB Hackney in 2018, she developed and delivered extensive stakeholder and community engagement, working with public and private sector clients on masterplan proposals, mixed-use developments and area planning guidance across London. Lizzie's current role is focused on preparing area-based plans, planning guidance and design briefs across the Hackney.

[Ayanda Collins](#), Interim Head of Transport Projects & People Friendly Streets, LB Islington | [@IslingtonBC](#)



Ayanda Collins is an urbanist with a passion for creating just cities. She has six years' experience in smart cities technology, urban planning and transport programme delivery. She is currently the 'People-Friendly Streets' programme manager at LB Islington, working on a programme of low traffic neighbourhoods, school streets and cycle lanes and delivering an ambitious transport strategy. She has a Master's degree in in Regional and Urban Planning Studies from the London School of Economics.

[Sara Hanrahan](#), Partner, Lewis Silkin | [@LewisSilkin](#)



Sara is a planning partner within Lewis Silkin's Real Estate Department and has over 20 years' commercial experience. Sara advises on all aspects of planning and specialises in major re-development and urban regeneration projects. Sara acts for a wide range of clients including developers, housing associations, local authorities and high net worth individuals. Sara is a mentor for FoL's [Future London Leaders](#) programme.

[Stefanos Koryzis](#), Research Manager, London Communications Agency | [@LDNComms](#)



Stefanos is a specialist in political and policy research, with experience in helping organisations across a range of sectors navigate their public affairs. He plays a central role in maintaining London Communications Agency's intimate knowledge of the capital's political machinery – and of the trends shaping the city's future, particularly in relation to the built environment. He is also part of the "[LDN – London in Short](#)" e-bulletin's editorial team and regularly delivers presentations on London politics.

Morning breakout: Transport in changing times

Transport patterns have changed and will and will continue to change in recovery. How do we make future transport schemes green, fair and accessible and avoid car-led recovery? Showcasing innovative approaches to the challenge at different scales.

Chair: [Bhavna Brooker](#), Spatial Planning Programme Lead, TfL | [@TfL](#)



Bhavna is a chartered member of the Royal Town Planning Institute with nine years' experience in the development sector ranging across local authority, private sector and local government. In Bhavna's current role her work focuses on making the case for investment in transport schemes to unlock land for development opportunities. Alongside this role she is also Spatial Planning Programme Lead for the GLA Collaboration Programme where she leads on identifying opportunities for greater collaboration between the TfL Spatial Planning and GLA Planning teams.

Nick Bec, London Data and Digital Leader, Arup | [@ArupUK](#)



Nick is part of Arup's Transport Planning team in London, where he works on data- and analytics-driven projects for clients. He has worked in a variety of sectors and industries, focusing on the value and impact that data can have on an organisation. He has a specific interest in understanding multimodal transportation and the impacts of new modes and interventions.

David Christie, Growth and Masterplanning Manager, TfL | [@TfL](#)



David leads the Growth and Masterplanning team in TfL's City Planning department. His team supports the development of 'Good Growth' in opportunity areas and develops the case for sustainable transport investment. Before that he developed TfL's approach to scenario planning and horizon scanning and worked on the demand forecasting for many of the key strategic transport and land use questions facing the capital. Aside from TfL, David spent 8 years as a councillor and cabinet member in London Borough of Newham and has non-executive experience in the housing and development sector.

Katie Pennick, Campaigns Lead, Transport for All | [@KatiePennick](#) [@TransportforAll](#)



Katie is a disability rights campaigner working in inclusive design, accessible infrastructure, and the intersections of environmentalism and accessibility. She is the Campaigns Lead at Transport for All, the only disabled-led group striving to increase access to transport and streetspace across the UK. In this role, she leads on the organisation's campaigning, policy, and influencing work, and recently published the [Pave The Way report](#) on the impacts of Low Traffic Neighbourhoods on disabled people.

Afternoon breakout: Working with our communities as equals

Driven by our network's feedback that there is a lack of understanding about the communities we most need to support, this workshop will showcase a positive and meaningful approach to community engagement at [Shepherd's Bush Market](#) and then involve a workshop to tease out the priorities for engagement.

Chair: Tara Nelson, Research and Projects Officer, Future of London | [@FutureofLDN](#)



Tara joined Future of London as Research and Projects Officer (maternity cover) in January 2021 and works as part of the Knowledge Team to help shape the organisation's overall programme. With previous experience working with both land and housing rights and community development in Rio de Janeiro, she has a particular interest in sustainable urban development policy. She also has experience working with events in the charity sector in the UK. Tara has an MA in International Development from Sciences Po, Paris.

Louis Page-Jennings, Director of Communications and Social Impact, Yoo Capital



Louise Page-Jennings is Yoo Capital's Director of Communications and Social Impact. Louise oversees all aspects of communication, consultation and stakeholder engagement as well as ensuring all projects deliver social impact. Prior to joining Yoo Capital, Louise spent eight years in public affairs and communications. During this time, she advised on the communications and consultation strategies for large-scale development projects across London and the UK and worked on campaigns to raise awareness of new and emerging tenures.

Celina Matheson, Olympia resident

Workshop facilitators

- **Lora Botev**, Business Development Manager (UK), CitizenLab
- **Patrick Devlin**, Partner, Pollard Thomas Edwards
- **Clare Reddy**, Partner, Lewis Silkin LLP
- **Anna Odedun**, Head of Knowledge, Future of London
- **Blossom Young**, Head of Operations, Poplar HARCA

Afternoon breakout: Grassroots culture and heritage as a catalyst for recovery

Grassroots culture can support jobs, growth and community cohesion. Drawing on LB Brent's experience as [London Borough of Culture](#) we will discuss how heritage and culture from minority groups can be built into regeneration programmes to help reduce multiple inequalities.

Chair: [Jane Jones](#), Head of Leadership, Future of London | [@FutureofLDN](#)



Jane joined Future of London in September 2020 as Head of Leadership, overseeing our [leadership programmes](#). With a background in business excellence and employee engagement, she has a passion for building the capability of individuals and organisations through professional development. Previously Acting Chief Executive at Investors In People, Jane led a radical overhaul of products and worked closely with the Department of Health to launch a Health and Wellbeing Award. At the Cabinet Office, Jane helped design and launch Customer Service Excellence, based on the key drivers of customer satisfaction and insight.

[Zerritha Brown](#), Brent 2020 Legacy Manager, LB Brent | [@ZeeBrown50](#) [@Brent_Council](#)



Zerritha Brown is a Cultural Producer and Arts Leader with 20 years' experience in community and participatory arts and large-scale events. Over the last 10 years she has led on culture for Brent Council, most recently leading the Brent 2020 [No Bass Like Home](#) project, which captured the borough's Reggae history through community stories as well as the 2018 Windrush 70 exhibition produced with the community to celebrate the contributions of the Windrush generation in Brent.

[Kate Falconer Hall](#), Associate, Montagu Evans | [@MontaguEvansLLP](#)



Kate's professional career is based in London and in Regional Towns where she specialises in supporting the redevelopment schemes in sensitive urban environments. Kate brings particular expertise on sites where design, townscape and heritage sensitivities influence development outcomes. Kate works with public and charitable estates including King's College London, Canterbury Christ Church University and The British Museum as well as for government bodies and private developers in joint ventures on regeneration and town centre schemes.

[Diane Shrouder Johnson](#), Brent 2020 Storyfinder



Diane is a community worker from Willesden, Brent, with a passion for working with young people. She is a life-long Brent resident and has strong personal connections to the reggae music community in London and beyond. Diane was asked to come onboard with the No Bass Like Home project as a Brent 2020 Storyfinder, carrying out interviews with artists for the projects.

International panel: Housing for diverse communities

Some inspiring international examples to help us tackle one of our biggest challenges: good quality, affordable housing for our diverse communities.

Chair: [Mandar Puranik](#), Future of London Alumni Representative and Head of Area Regeneration and Economic Renewal, LB Ealing | [@MandarPuranik](#) [@EalingCouncil](#)



Mandar heads the Regeneration and Economic Renewal Team at Ealing, responsible for placed based strategies, 'good growth', green enterprise and leveraging investments at Southall, Northolt, Greenford, North Acton and Uxbridge Road corridor. He is involved in a number of strategic infrastructure projects and works across Ealing's partners at the West London Alliance. Prior to Ealing, Mandar has worked at Sutton, Design Council Cabe, Whitehill & Bordon-Hampshire Green Town and LB Tower Hamlets.

[Natalia Martinez](#), Head of Fundraising, Habitat (Spain, Catalonia) | [@Habitat_3](#)



Natalia has an MD in Economics by Universidad de Barcelona, 1991 and a Post degree in Leisure and Tourism studies by Universiteit Gent. She developed her career in the private sector as a Real Estate Agent and Property Manager until 2015 when she joined Fundació Hàbitat3 as head of the homes acquisition department. She's also coordinated the programme [Vivienda para las entidades sociales](#) (Homes for social organisations) Since May 2021 she has shifted to fundraising and development, seeking to foster partnerships with private companies.

Tricia Patel, Partner Pollard Thomas Edwards | [@PTEarchitects](#)



Tricia Patel, an equity partner and a design workshop leader who joined PTE in 1991, is renowned for delivering large-scale, award-winning residential-led regeneration projects. She places a commitment to working with communities at the heart of her approach, pairing years of design experience with deep-dive consultation. Her enthusiasm, and talent for listening, uncovers what clients and user groups really want from their projects.

Diana Yordanova, Communications Director, Housing Europe | [@HousingEurope](#)



Diana is leading the external and internal communications work of Housing Europe, including the organisation's online presence, press relations, event curation and European projects related communication activities. She brings to the Federation experience in campaigning, rebranding and making complex EU issues easier to grasp. Diana has a degree in Journalism from the University of National and World Economy in Sofia, and a Master Degree in New Media and Society in Europe from Vrije Universiteit Brussel.

Stephanie Zeulvoet, Architect, Inbo Architects



Stephanie Zeulvoet is an architect working at Inbo architects. She is involved in several co-creation projects in the Netherlands, focusing on designing and developing housing concepts together with future residents. One of these projects is social housing estate [Space-S](#) in Eindhoven, which has been awarded the World Habitat Silver Award in 2020. Its design and development have been led by its 600 tenants, and the estate continues to be managed by the tenants themselves.

Closing spotlight: A framework to promote diversity in the built environment

Demonstrating a practical approach to promoting small BME architecture and design practices and providing a refreshing and honest perspective on [promoting inclusivity through our decision-making processes](#).

Paul Smith, Regional Procurement Manager London & South East, LHC | [@LHCProcurement](#)



Paul began his career in public sector housing working for Newark and Sherwood Homes in Nottinghamshire, where he spent 8 years, starting as a temporary finance admin officer before working his way up to procurement manager. Having managed tenant insurance, leaseholder properties, customer service, careline services and procurement he moved into the framework sector with Consortium Procurement in 2019. Today he works for national framework provider LHC, specialising in Construction, as the Regional Procurement Manager. Paul is passionate about procurement and helping to change the way procurement is done to open the public sector to the very best suppliers available.

DELEGATES

Name	Organisation
A	
Yaz Aboubakar	LB Brent
Matilda Agace	Common Vision
Valentine Agamah	Cascade Communications
Matthew Aihie	Countryside Properties
Ladi Ajayi	LB Hackney
Omar Al-Amin	Dot Dot Dot Property
Mahbub Anam	LB Enfield
Sandra Aniemeka	LB Lambeth
Simon Attafuah	Clarion Housing Group
Paul Augarde	Augarde Consulting
B	
Olusola Baiyewu	London & Qudrant Housing Group
Ben Bakare-Tinko	LB Southwark
Tope Balogun	Austin-Smith:Lord
Katie Banks	LB Redbridge
Polly Bass	LB Camden
Andrew Beharrell	Pollard Thomas Edwards
Simon Bevan	Retired
Raj Bhajun	Geo Environmental Services Ltd
Gurdip Bindra	LB Hammersmith and Fulham
Rachel Birrell	Transport for London
Sarah Birt	Greater London Authority
Dr Sarah Bissett Scott	RISE Associates
Palma Black	Soul Purpose 360 CIC
Michael Blake	RB Kensington and Chelsea
Lorna Blake	Sovereign
Charles Blomley	Be First
Rumi Bose	LB Southwark
Andrew Bosi	London Forum of Amenity & Civic Societies
Lora Botev	CitizenLab
Matt Briant	Quod Ltd
Laura Bridges	31tenconsulting
Hermione Brightwell	LB Hackney
Charli Bristow	LB Tower Hamlets
Anthony Brogan	Montagu Evans
Duncan Brown	RB Kingston
Patrick Bunker	Built-ID
C	
Gala Camacho	Diagonal
Abi Carter	Dot Dot Dot
Jasmine Ceccarelli-Drewry	LB Hackney
Joanna Chambers	Changing Cities
Clare Chettle	Airey Miller
Zohra Chiheb	LB Camden

Name	Organisation
Azizun Choudhury	Incite communications
Lee Christie	RB Greenwich
Greyson Clark	Arup
Tony Clements	London Councils
Margaret Collins	Hatch
Francesca Colloca	London Legacy Development Corporation
Saul Collyns	British Land
Joanna Corfield	Centre for London
Carol Costello	Cullinan Studio
James Cottis	Cottis Invesments
Marina Cox	One Housing
Beth Cross	Be First
Anne-Marie Cunningham	LB Southwark
D	
Billie Dainton	LB Wandsworth
Paul Davies	LB Southwark
Vincenza De Falco	DFN Project SEARCH
Alix de Nercy	Deloitte
Clare Delmar	Listen to Locals
Osman Dervish	Cratus Communications
Patrick Devlin	Pollard Thomas Edwards
Greg Dewhirst	Spacehive
Laura Di Milla	UCL Institute for Sustainable Heritage
Jessica Dialdas	Homes England
Marc Dorfman	TPM Ltd
Jenny Dunn	LB Camden
Gill Dunningham	Lovell
E	
Iquo Edem	Forward Trust
Andrew Eland	Diagonal Works
Guy Emanuel	Kanda Consulting
Larry Evans	LB Hackney
F	
Eleanor Fawcett	Old Oak and Park Royal Development Corporation
Hannah Fawdon	Hybrid Planning & Development
Rachel Ferguson	Rachel Ferguson
Victoria Fern	Kings Facility Management
John Field	-
Claudette Forbes	CAF Consulting Ltd
Amy Fuller	Dot Dot Dot Property
Rob French	LB Brent
G	
Kirsten Galea	Proudlock Associates
Rita Gayford	Rita Gayford

Name	Organisation
Lauren Gee	LB Havering
Patrick Gee	Skyroom London
Laura Georgescu	Transport for London
Sharon Giffen	Transport for London
Lauren Gillett	UCL
Charlotte Glazier	LB Islington
Jonathan Goldstraw	The Hyde Group
Efa Gough	Central London Forward
Bianca Goulden	L&Q
Philippe Greaves	City of London Corporation
H	
Irene Hakansson	Notting Hill Genesis
Abdul Hakim	University of East London
George Harrington	Hatch
Beth Havelock	Transport for London
Charlie Hawley	Built-ID
Daniel Hill	Real Urbanism, Sitopia Farm, Dark Matter Labs
Stephen Hill	C2O futureplanners
Winston Hislop	Aquablu Games
Ruth Holmes	London Legacy Development Corporation
Nyemu Holness	LB Lambeth
Karen Honey	LB Camden
Christina Hsieh	CH Simple Design Ltd
Vicky Huang	Vicky Huang / Red Loft
Paula Huzjak	One Housing
Sisa Hwalima	LB Westminster
I	
Joyce Ip	LB Hounslow
Kate Ives	Countryside Properties
J	
Tom Jackson	Linkcity
Saffron Jackson	LB Hounslow
Diana James	Westminster LGBT+ Forum
Simon Jeffery	Hill
Alex Jeremy	Poplar HARCA
Gwenael Jerrett	London Legacy Development Corporation
Cllr Robert Johnson	LB Brent
Robert Johnson	Advice for Renters
K	
Alon Kahani	Freelance
Roland Karthaus	Matter Architecture
Santokh Kaulder	LB Newham
Leanne Keltie	LB Islington
Jonathan Keen	LB Croydon
Anouk Khan	Real Estate Women
Lily Khan	University of Manchester
Ian Kilvington	Buro Happold
Frank Klepping	Altair

Name	Organisation
Ben Kochan	Freelance
Edwina Koffie	City of London Corporation
Rob Krzyszowski	LB Haringey
Lily Kwong	Be First
L	
Sherileen Lambert	Forward Trust
Suzanne Lansley	LB Redbridge
John Lawlor	London Legacy Development Corporation
David Lee	Greater London Authority
So Sum Lee	Inner Circle Consulting
Donna Lightbrown	Royal Docks London
Annabel Lindsay	Lewis Silkin
Saskia Little	Landscape Institute
John Lumley	L&Q
Suzanne Lutton	Farrans Construction
M	
Rowan Mackay	Community Led Housing London / ASF-UK
Victoria Maddox	Community Sauna CIC
Lily Mahoney	LB Hackney
Marie Makanjuola	LB Southwark
Raj Mandair	Huddle Communications
Oscar Mansfield Jones	University of Birmingham
Ilana Manuel	LB Hackney
James Martin	LB Waltham Forest
Jonathan Martin	LB Waltham Forest
Daniel Massey	RB Kensington and Chelsea
Helen Masterson	LB Newham
Sasha Mather	Skyroom
Will Matthews	Campbell Tickell
Oliver Maury	Montagu Evans
Connor McDonagh	LB Ealing
Neil McDonald	Stour Space / Hackney Wick Fish Island Community Development Trust /Civic State
Chloe McFarlane	UCL
Adam McLaren	Kanda Consulting
Celine Mionnet	LB Hackney
Adriana Moreno	Arup
Tomi Moronkola	Greater London Authority
Cailin Murphy	The Academy of Urbanism
Laura Murray	Countryside Properties
Caroline Murray	Poplar HARCA
Elis Mutlu	Peabody
N	
Janine Newton	Countryside Properties
Matthew Nimmo	Inner Circle Consulting
Elina Nuutinen	The Bartlett School of Architecture

Name	Organisation
Bettina Nyamekye	LB Hackney
O	
Nkechi Okeke-Aru	RB Kingston
Toyin Omodara	Barking Riverside Ltd
Jamie Onuan	Inner Circle Consulting
Jack Owen	LB Waltham Forest
Lucy Owen	Lucentia Consulting
P	
Yulia Pak	WSP
Niral Patel	LB Hammersmith and Fulham
Sufiya Patel	Applied
Natalie Patrick	RLB
Mark Pearson	Canal & River Trust
Tanja Pfitzner	L&Q
Oliver Pinch	LB Barnet
Agata Podgajna	Apa
Helena Powell	Countryside Properties
Q	
Abdul Qadir Qureshi	LB Enfiled
R	
Mamnun Rahman	Well One
Katrina Ramsey	Greater London Authority
Selina Rattu	31ten Consulting
Calre Reddy	Lewis Silkin
Natasha Reid	MATTER . SPACE . SOUL
Clare Richards	ftwork
Giulia Robba	Farrells
Otis Roberts	Jason Roberts Foundation
John Ryan	The Oxford House in Bethnal Green
S	
Sabrina Safdar	LB Brent
Wafaa Salim	London Metropolitan University
Laurie Sanderson	L&Q
Hilary Satchwell	Tibbalds
Louise Scannell	Weston Williamson+Partners
Giorgia Scognamiglio	LB Waltham Forest
Ivann Schlosser	UCL CASA
Felicity Scott	Poplar HARCA
Daniel Scott-Kerr	Built-ID
Paul Semple	Ecoworld London
Mahmud Shahnawaz	The Utilize Project CIC
Ashish Sharma	Greater London Authority
Lauren Sinclair	LB Haringey
Mark Slowikowski	LB Tower Hamlets
Neil Smith	HS2 Ltd
Paul Smith	LHC
Tina Smith	Smiley's PlayTime
Carla Smyth	London Legacy Development Corporation

Name	Organisation
Saira Soarez	Apt Works Ltd
Carol Squires	LB Croydon
Christina Sriramula	LB Westminster
Ed Stannard	Parks for London
Martin Stannells	Lewisham Homes
Kerry Starling	Hyde Housing
Natalie Stump	L&Q
Michelle Sweeney	Archetype associates
T	
Sophie Taysom	Keyah Consulting
Janet Townsend	London Legacy Development Corporation
Clive Tritton	Regeneration Consultant
Chris Twigg	Inner Circle Consulting
U	
Nargis Uddin	Forward Trust
V	
Carlos Valenzuela	Architectual Association
Anthony Van Hoffen	Lewis Silkin
Nimrod Vardi	Arbeit
Davinia Venton	Countryside Properties
W	
Jospeh Waddimba	London & Qudrant
Ian Wall	RB Greenwich
Ed Wander	London First
Lucille Watkins-Brazier	Lendlease
Lucy Webb	Inner Circle Consulting
Tony Westbrook	London Legacy Development Corporation
Karen West-Whyllie	Barking Enterprise Centres CIC
Ken Whittaker	Quota Heritage
Anna Williams	Swan Housing
John Wilman	LB Westminster
Eleanor Wright	British Land
Y	
Blossom Young	Poplar HARCA
Sarah Young	Southern Housing Group
Z	
Berenika Zembski	Swan Housing

Future of London Team	
Hannah Gibbs	Head of Knowledge (maternity cover)
Jane Jones	Head of Leadership
Eunice Leong	Knowledge Intern
Fran Lord	Head of Communications & Engagement
Nicola Mathers	Chief Executive
Michael Nathan	Emerging Talent Programme Manager
Sophie Nellis	Research & Projects Officer
Tara Nelson	Research & Projects Officer (maternity cover)
Anna Odedun	Head of Knowledge
Kamil Sheikh	Business Manager
Lisa Taylor	Executive Director
Safaa Usmani	Team Coordinator
Hazel Webb	Programme Manager